



## Sterile FiAPC<sup>®</sup> probes with safety filter

Maximum protection against  
contamination

# FiAPC®

## Plug and play in interventional endoscopy

Argon plasma coagulation is an endoscopic procedure to coagulate bleeding sites and devitalize tissue anomalies. For the use of APC in GIT and TBS, we recommend the FiAPC® probe – the new probe with the integrated mem-

brane filter. FiAPC® probes are available in various versions (varying lengths and diameters) with axial, lateral and circular openings for the plasma beam. FiAPC® probes are suitable for use with all standard-type flexible endoscopes.

### ADVANTAGES OF APC IN GASTROENTEROLOGY OR PULMONOLOGY

- ✔ Effective and rapid coagulation, even of larger areas
- ✔ Limited penetration depth, may therefore also be used in areas where there is a risk of perforation
- ✔ Minimal carbonization, better wound healing
- ✔ No vaporization, minimal risk of perforation
- ✔ Reduced smoke plume, good vision at the operation site, fewer unpleasant odors
- ✔ Non-contact procedure, therefore no adhesion of the probe to the tissue
- ✔ Minimal risk of damage to metal stentse
- ✔ Procedure is efficient and easy to learn
- ✔ Cost-efficient equipment



*The workstation for gastroenterology with the devices for electrosurgery, VIO® 3, plasmasurgery, APC 3, and hydrosurgery, ERBEJET® 2, as well as the endoscopy irrigation pump EIP 2*

## Flexible and versatile in their application

APC probes have varying outlet nozzles – lateral, axial or circular – for precise selective or surface APC coagulation depending on the target tissue.

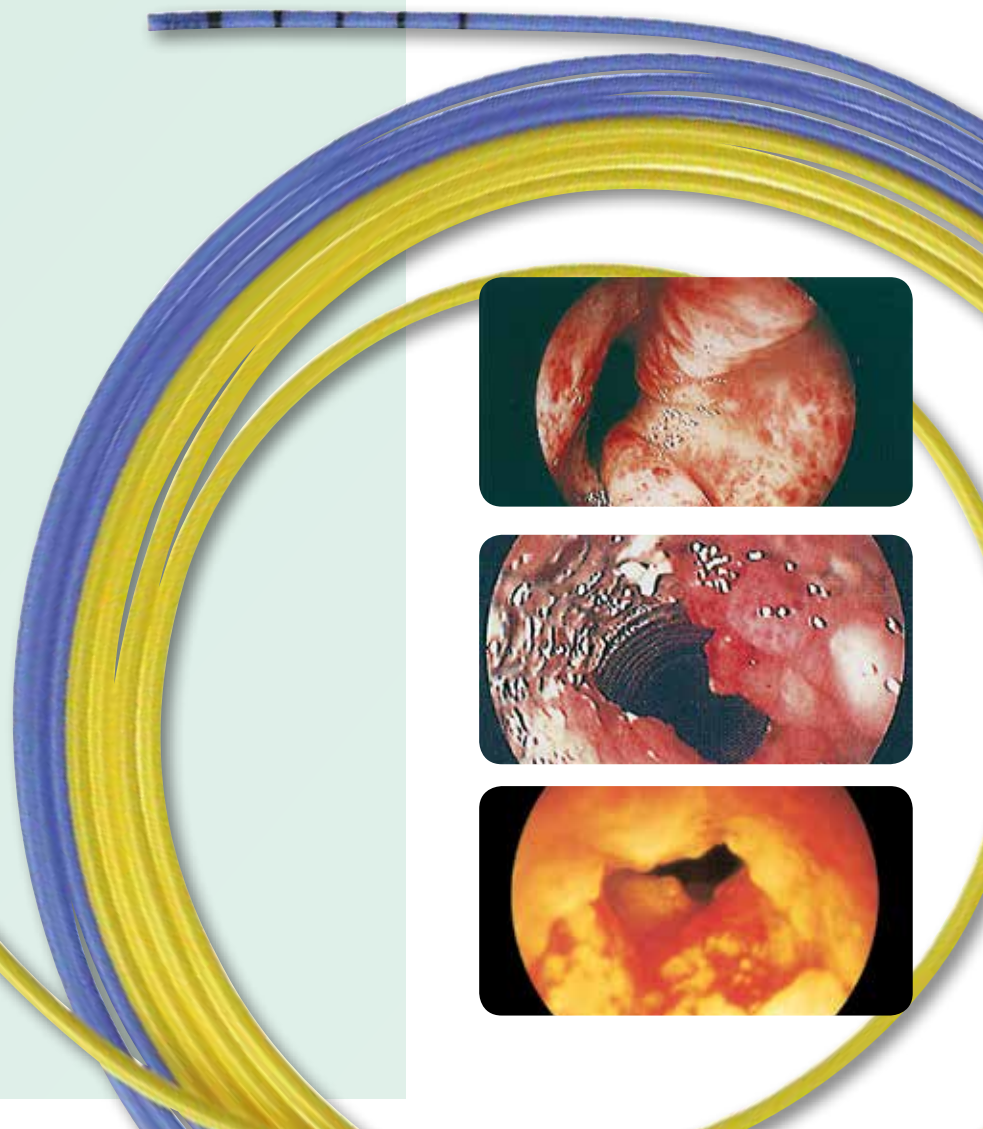
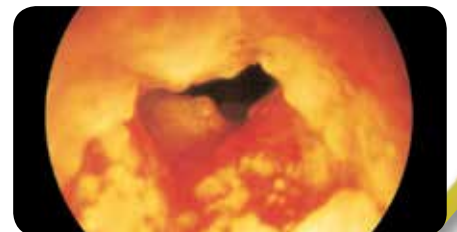
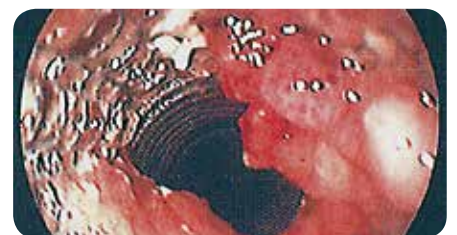
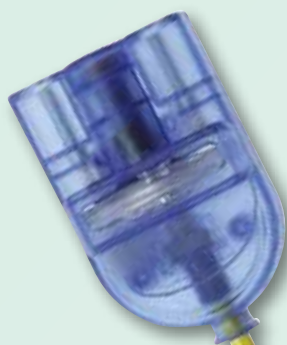
Examples include surface coagulation for watermelon stomach, devitalization of tumor tissue after stent ingrowth in the esophagus, tissue devitalization in tracheal papillomatosis.

---

### POTENTIAL INDICATIONS IN GASTROENTEROLOGY AND PULMONOLOGY

---

- ✔ Hemostasis of bleeding due to various causes, e.g. tumor bleeding, bleeding after bougienage or dilatation
- ✔ Tissue devitalization in partially stenosing tumors or parietal tumor areas
- ✔ Tissue devitalization in ingrowing tumors or of granulation tissue after stent placement (in-growth and over-growth)
- ✔ Devitalization of tumor tissue in areas where there is a risk of perforation



# Advantages

## of FiAPC® probes

The connection cable and filter of the FiAPC® probe are completely integrated in the probe („all in one“). FiAPC® single-use probes can be immediately used in the OR. There is no need to prepare the connecting cable – which means no preparation costs for the cable. This represents a significantly lower price per APC application compared to conventional single-use APC probes. „Plug and play“ doesn't get much easier and cheaper than that.

FiAPC® probes have particularly good ignition properties.  
For you this means: maximum user comfort.



### Protection against contamination

A membrane filter prevents possible contamination of the APC device through the reflux of blood or secretions. The filter and the connecting cable are firmly integrated in the APC probe. This all-in-one solution makes handling the probe in the OR much easier. Plug and play is supported by instrument detection.

FiAPC® probes comply with the hygiene recommendations for endoscopic instruments of the Robert Koch Institute\*.

#### THE ADVANTAGES AT A GLANCE:

- ✔ No preparation of the probe or cable required
- ✔ Therefore lower costs per APC application
- ✔ No replacement of the membrane filter required
- ✔ Plug and Play
- ✔ No contamination of the unit

\* Hygiene guidelines for the reprocessing of flexible endoscopes and endoscopic accessories.

Recommendations of the Commission on Hospital Hygiene and Infection Prevention of the Robert Koch Institute (RKI).

Bundesgesundheitsblatt 2002, 45:395–411; Springer Verlag.



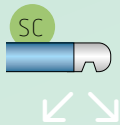
# Technical data of FiAPC® probes\*

## Beam forms

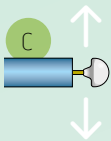
### Axial beam



### Side Fire Conical Beam



### Circumferential Beam



## Probes with Ø 1.5 mm

FiAPC® probe 1500 A, single-use  
Ø 1.5 mm/length 1.5 m  
No. 20132-220

FiAPC® probe 3000 A, single-use  
for double balloon enteroscopy  
Ø 1.5 mm/length 3 m  
No. 20132-226

## Probes with Ø 2.3 mm

FiAPC® probe 2200 A, single-use  
Ø 2.3 mm/length 2.2 m  
No. 20132-221

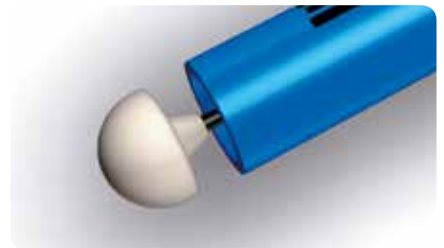
FiAPC® probe 2200 SC, single-use  
Ø 2.3 mm/length 2.2 m  
No. 20132-224

FiAPC® probe 3000 A, single-use  
Ø 2.3 mm/length 3 m  
No. 20132-223

FiAPC® probe 2200 C (circular),  
single-use  
Ø 2.3 mm/length 2.2 m  
No. 20132-225

## Probes with Ø 3.2 mm

FiAPC® probe 2200 A, single-use  
Ø 3.2 mm/length 2.2 m  
No. 20132-222



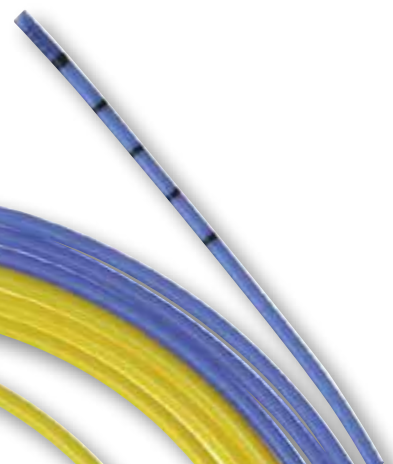
## FiAPC® probe 2200, circular\*

*The circular APC probe was designed to allow a radial application angle of 360° for optimal intraluminal application. Another advantage becomes apparent during handling: the APC beam coagulates the tissue nearest to it. It is not necessary to turn the probe towards the target area.*

\* Current patents: <https://www.erbe-med.com/ip>



No other accessories are required  
for FiAPC® probes



#### **Important information**

We have prepared this document with care. Nonetheless, we cannot completely rule out errors in this document.

The information, recommendations and other data ("Information") contained in this document reflect our state of knowledge and the state of science and technology at the time of preparing the document. The information is of a general nature, non-binding and serves solely for general information purposes and does not represent instructions for use or notes on application.

The information and recommendations contained in this document do not constitute any legal obligations by Erbe Elektromedizin GmbH as well as their associated companies ("Erbe") or any other claims against Erbe. The information does not represent a guarantee or other quality statement, these require the express contractual arrangement with Erbe in individual cases.

Erbe shall not be liable for any type of damage resulting from following information given in this document, regardless of the legal reason for liability.

Every user of an Erbe product is responsible for checking the respective Erbe product for its properties as well as the suitability for the intended type of application or intended purpose in advance. The suitable type of application of the respective Erbe product is given by the user manual and the notes on use for the corresponding Erbe product. The user is obliged to check whether the existing user manual and the notes on use correspond with the status for the specific Erbe product. The devices may only be used according to the user manual and the notes on use.

The information on setting values, application sites, duration of application and the use of the respective Erbe product is based on the clinical experience of physicians independent from Erbe. They represent guidelines which need to be checked by the user for their suitability for the actual planned application. Depending on the circumstances of an actual application case, it may be necessary to deviate from the information provided. The user has to check this on his/her own responsibility in each case when using an Erbe product. We wish to point out that science and technology is constantly subject to new developments arising from research and clinical experience. For this reason it may be necessary for the user to deviate from the information provided in this document.

This document contains information about Erbe products which may possibly not be approved in a specific country. The user of the respective Erbe product is obliged to inform him/herself whether the Erbe product he/she is using is legally approved in his/her country and/or if legal requirements or restrictions for use possibly exist and to which extent.

This document is not intended for users in the USA.

Erbe Elektromedizin GmbH  
Waldhoernlestrasse 17  
72072 Tuebingen  
Germany

Phone +49 7071 755-0  
Fax +49 7071 755-179  
info@erbe-med.com  
erbe-med.com